



THURSDAY

AUGUST 10TH, 2023

6:30 PM

BRING THE FAMILY FOR SOME FUN

Sign up is Thursday August 10th, 2023 by the middle ticket booth of the outdoor arena between 3:00 & 6:00 pm. If you are participating in Greased Pig the cost is \$5.00 pp and registration is required. Horse events are free but requires a registration. All other events are open to all children in the age appropriate bracket and no sign up is needed.



Gates open at 5:30 pm

Admission: \$2 Kids under 2 free



Persons with disabilities have the right to request and receive reasonable accommodations. Please complete the form found at [reasonable-accommodation-for-4-h-parent-complete.pdf](https://uidaho.edu/parent-complete.pdf) (uidaho.edu) to assist in evaluating the reasonable accommodation request at least two week prior to the event. Accommodation applications cannot be approved without supporting documentation. Submit the request form found in the link above along with supporting documentation to Center for Disability Access and Resources 875 Perimeter Drive Moscow, ID 83844-4257 cdar@uidaho.edu Phone 208-885-6307, Fax 208-885-9404

Sponsored by Boundary County 4-H Leaders Association & ERA Shelman Realty



Protecting what matters most.

Coleman Frank: Agent
office: (208) 267-5502
Email: clfrank@idfbins.com

GET AN INSURANCE REVIEW TODAY!

6476 S MAIN ST. BONNERS FERRY. ID

 **BOUNDARY**
Community Clinics

a division of Boundary Community Hospital

- Pediatrics
- Family Medicine
- Same Day Visits
- Disease Screening
- Chronic Disease Management
- Specialty Referrals
- Women's Health
- Physicals
- Pregnancy Care



Caring for Our Community Every Day

208-267-3655

| boundarycommunityhospital.org

| 6641 Kaniksu Street Bonners Ferry, ID

BADGER BUILDING CENTER



PROUD SUPPORTERS OF 4-H & FFA!

Bonnors Ferry, ID
34 Swift Lane
208.267.0002

Sagle, ID
260 Chevy St.
208.263.0253

Post Falls, ID
2813 E. Seltice Way
208.773.1848

Kalispell, MT
2930 Hwy. 2 East
406.755.3820

STORE HOURS: MON-FRI 7:30am - 5:00pm | SAT 8:00am - 4:00pm
CLOSED SUNDAY

www.BadgerBuilding.com

ENTERTAINMENT

Talent Team Performing Arts

Talent Team Performing Arts is a non-auditioned performing group which produces, fun, family friendly shows while helping participants become triple threats (skills in singing, dancing and acting). Talent Team productions are original and enable performers to grow at their own pace. The more they stick with it the better they become. This year's title is "Seize the Day". You will enjoy a variety of songs like "I Can See Clearly Now", "Singing in the Rain", "The Bear Necessities" and many more. You won't want to miss this show stopping performance!

Performance times published in the daily schedule Wednesday- Saturday.

MOTORCYCLE SHOW

"Iron Memories"
 4th Annual Motorcycle Show
 Saturday August 12th

Come peruse the largest ever vintage and custom motorcycle show in Bonner's Ferry History.



CECIL THE MAGICIAN

Cecil Lewis has been thrilling audiences in the Northwest for the past 30 years. With his unique style of Magic. From fairs, festivals to corporate events, his shows are suitable for all ages. See for yourself why Cecil is considered one of the best family entertainers in the business. Lewis, a native of Mississippi, has been working the stage for nearly his entire life. The story sounds like a made-for-the-big screen motivational tell. Back when Lewis was just six years old and living in Mississippi, he sent in a dollar to a company advertising magic tricks in the back of a comic book. By the time he had moved to Idaho ten years later, his skill had grown well beyond his tender years. See the fair schedule for show times Wednesday- Saturday

Thank you to our county residents who support our fair

- ◆ *Through the generous volunteer hours given to Open Class, 4-H and FFA*
- ◆ *By sponsoring the many fair awards, contests and games AND...*
- ◆ *By taking the time to attend our great county fair!! Our county is the BEST!*



Murphy Cabinet Bed

The Murphy Cabinet Bed is a truly instant guest bed. Convert it from a handsome cabinet to a comfy queen bed in less than a minute. When all closed up it just takes 10 square feet of floor space with a premium gel memory foam mattress. Perfect for a loft area or bonus room. Easy to use, easy to love.

Select Models \$1,999 to \$2,599



Visit our Murphy Cabinet Shop at
SANDPOINTFURNITURE.COM



ALL IN-STOCK MURPHY CABINETS ON SALE!
Working hard to be your hometown furniture store for 78 years!



**SANDPOINT
 FURNITURE
 & MATTRESS**

401 Bonner Mall Way, Ponderay, Idaho
208.263.5138
 Mon-Fri 8am-5pm | Sat 9am-5pm | Closed Sundays





Adult Coloring Page

Name: _____

Photos Plus



We offer many services:

Digital printing including sizes:

3½x5, 4x6, 5x7, 8x10, 8x12 or collages

We now can printer bigger photos & blueprints

Passport photos

Slides to print or digital

Photo reprints from scanned photos

Photo editing

Photo announcements



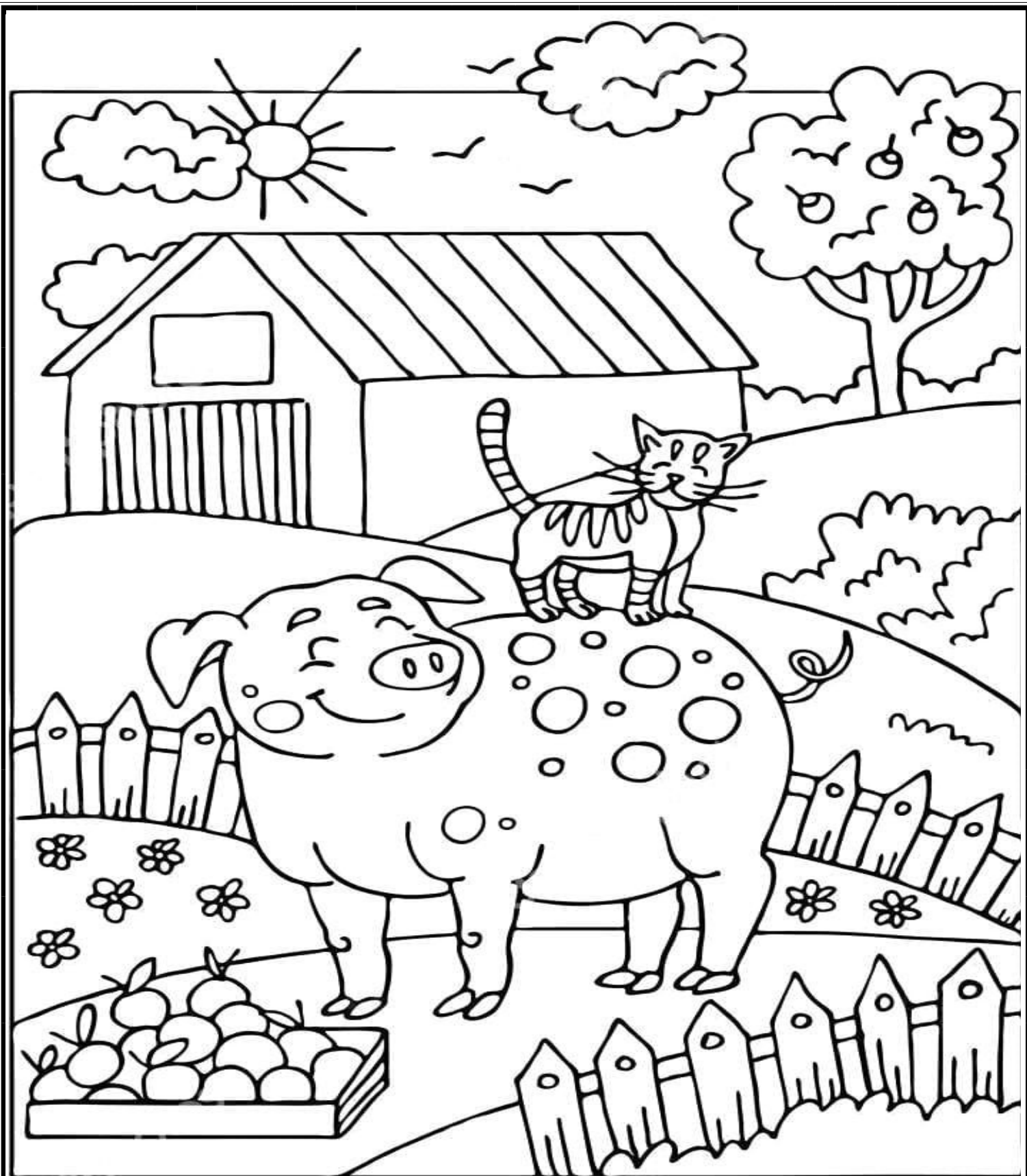
Video to DVD:

8mm reels, 8mm tapes,

MiniDV and VHS

7024 Funkhouser St
Bonners Ferry
208.267.5115
photosplus5115@gmail.com





Name: _____

Age: _____

OPEN CLASS ANIMALS

DEPARTMENT A BEEF CATTLE

Superintendent: Liz Wood 208-267-6170

Entry Check In: Monday, August 7th, 3-6 pm
Entry Check Out: Saturday, August 12th, 7-9 pm
See General Rules on pages 26-27

Premiums: 1st - \$8; 2nd - \$4; 3rd - \$2

- CLASS A - SHORTHORN
- CLASS B - POLLED HEREFORD
- CLASS C - HEREFORD
- CLASS D - BLACK ANGUS
- CLASS E - CHAROLAIS
- CLASS F - SIMMENTAL
- CLASS G - LIMOUSIN
- CLASS H - OTHER PUREBRED
- CLASS I - CROSSBREDS
- CLASS J - FEEDER CALF
 - LOT 1 - Bull: 6 months and under
 - LOT 2 - Bull: 7 - 12 months
 - LOT 3 - Bull: 13 - 18 months
 - LOT 4 - Bull: 19 - 23 months
 - LOT 5 - CHAMPION and RESERVE CHAMPION BULL
CALF: 1st and 2nd place winners Lots 1-4
 - LOT 6 - Bull: 2 years old
 - LOT 7 - Aged Bull: 3 years and older
 - LOT 8 - CHAMPION and RESERVE CHAMPION SENIOR
BULL: 1st and 2nd place winners Lots 6 & 7
 - LOT 9 - CHAMPION AND RESERVE BULL:
1st and 2nd place winners Lots 5 & 8
 - LOT 10-Heifer: 6 months and under
 - LOT 11-Heifer - 7-12 months
 - LOT 12-Heifer - 13-18 months
 - LOT 13-Heifer - 19-23 months
 - LOT 14-CHAMPION and RESERVE CHAMPION HEIFER
CALF: 1st and 2nd place winners Lots 10-13
 - LOT 15-Cow - 2 years old
 - LOT 16-Aged Cow - 3 years and over
 - LOT 17-Cow with Nursing Calf
 - LOT 18-CHAMPION and RESERVE CHAMPION SENIOR
COW: 1st and 2nd place winners Lots 15-17
 - LOT 19-CHAMPION and RESERVE CHAMPION BREED
COW: 1st and 2nd place winners Lots 14 & 18
 - LOT 20-Pair of calves: Lots 1-2, 10-11, either sex
 - LOT 21-Pair of Yearlings: Lots 3-4, 12-13, either sex
 - LOT 22-Get of Sire: Three head, either sex
 - LOT 23-Produce of Dam: Two offspring of dam
 - LOT 24-Best 3 Head of Each Breeder: Same breed or cross
breed
- CLASS K -GRAND CHAMPION and RESERVE GRAND
CHAMPION OVERALL BREEDS, BULL
1st and 2nd place winners Lot 9 each breed
- CLASS L -GRAND CHAMPION and RESERVE GRAND
CHAMPION OVERALL BREEDS, COW
1st and 2nd place winners Lot 19 each breed

DEPARTMENT B DAIRY CATTLE

Superintendent: Liz Wood 208-267-6170

Entry Check In: Monday, August 7th, 3-6 pm
Entry Check Out: Saturday, August 12th, 7-9 pm
See General Rules on pages 26-27

Premiums: 1st - \$8; 2nd - \$4; 3rd - \$2

- CLASS A - HOLSTEINS
- CLASS B - JERSEYS
- CLASS C - GUERNSEY
- CLASS D - MILK, SHORTHORN
- CLASS E - AYRSHIRES
- CLASS F - GRADE FEMALES
 - LOT 1 - Cow, 3 years and over
 - LOT 2 - Cow, 2 years old
 - LOT 3 - Cow/calf pair
 - LOT 4 - Heifer, Yearling
 - LOT 5 - Heifer, Calf
- CLASS G - GRADE MALES
 - LOT 1 - Bull, over 2 years
 - LOT 2 - Bull, under 2 years and over 1 year
 - LOT 3 - Bull, under 1 year



OPEN CLASS ANIMALS

DEPARTMENT C DAIRY GOATS

Superintendent: Jessi Miller 949-278-1768

Entry Check In: Monday, August 7th, 3-6 pm
Entry Check Out: Saturday, August 12th, 7-9 pm
See General Rules on pages 26-27

Premiums: 1st - \$5, 2nd - \$3, 3rd - \$2

- CLASS A - SAANENS
- CLASS B - TOGGENBURGS
- CLASS C - NUBIANS
- CLASS D - LA MANCHA
- CLASS E - NIGERIAN DWARF
- CLASS F - OTHER PURE BREEDS
- CLASS G - CROSSBREEDS
 - LOT 1 - Doelings, under 6 months
 - LOT 2 - Doelings, 6 months to 1 year
 - LOT 3 - Does, 1 - 2 years, dry
 - LOT 4 - Does, 2 years and under, Milking
 - LOT 5 - Does, 3 years and over
 - LOT 6 - Get of Sire, Does, any age, same sire
 - LOT 7 - Buck, under 6 months



DEPARTMENT D FLEECE BEARING GOATS

Superintendent: Jessi Miller 949-278-1768

Entry Check In: Monday, August 7th, 3- 6 pm
Entry Check Out: Saturday, August 12th, 7-9 pm
See General Rules on pages 26-27

Premiums: 1st - \$5, 2nd - \$3, 3rd - \$2

- CLASS A - ANGORA
 - LOT 1 - Doelings, under 6 months
 - LOT 2 - Doelings, 6 months to 1 year
 - LOT 3 - Does, 1 - 2 years, dry
 - LOT 4 - Get of Sire, Does, any age, same sire





Beef ~ Lamb ~ Hay

Kim
(208) 946-7668

Trevor
(208) 290-1671

www.cushmanfamilyfarm.com

BEEHAVEN FLOWER FARM

Local Grower & Florist

- Wedding & Events
- On-Farm Classes
- Everyday Flowers
- DIY Flowers
- Local Delivery
- Farm Stand

Floral Studio & Farm Stand

2431 Moon Shadow Rd.
Bonners Ferry, ID 83805
208.267.4136
www.beehavenfarm.com



DEPARTMENT E POULTRY

**FREE AVIAN FLU TESTING 7/26
2-5 PM @ Fairgrounds**

Superintendent: Amy Tye 208 267-2233

Entry Check In: Monday, August 7th, 3-6 pm
Entry Check Out: Saturday, August 12th, 7-9 pm
See General Rules on pages 26-27

Premiums: 1st \$3, 2nd - \$2, 3rd - \$1
Must have had test & band or no entry.

Water cups are provided, self waterer is encouraged.

1. Due to limited space, 4-H is given first priority. Call the Fair Office with questions, 208-267-7041.
2. Lots 5 and 6 pairs must match in color, age and breed.
3. **All poultry must be clean and parasite free. Poultry will be checked at registration and will not be entered if infested.**
4. No clipped wings.

CHICKENS

- CLASS A - SINGLE COMB CLEAN LEGGED
- CLASS B - ALL OTHER COMB CLEANED LEGGED
- CLASS C - FEATHERED LEGGED
- CLASS D - BANTAM-SINGLE COMB CLEANED LEGGED
- CLASS E - BANTAM-ALL OTHER COMB CLEAN LEGGED
- CLASS F - BANTAM-FEATHERLEG
- CLASS G - EXOTIC - If more than one variety, they are to be judged separately
- CLASS H - MISCELLANEOUS BREEDS

Use Lots below for CLASSES A - H

- LOT 1 - Cock
- LOT 2 - Cockerel
- LOT 3 - Hen
- LOT 4 - Pullet
- LOT 5 - Pairs, old
- LOT 6 - Pairs, young
- LOT 7 - Old trio, 1 cock and 2 hens
- LOT 8 - Young trio, 1 cockerel and 2 pullets
- LOT 9 - Female with offspring

- CLASS I - DUCKS
- CLASS J - GAME BIRDS
- CLASS K - GEESE
- CLASS L - GUINEAS
- CLASS M - PIGEONS
- CLASS N - PHEASANTS
- CLASS O - TURKEYS

Use Lots below for CLASSES I - O

- LOT 1 - Male, over 1 year
- LOT 2 - Female, over 1 year
- LOT 3 - Male, under 1 year
- LOT 4 - Female, under 1 year
- LOT 5 - Pairs, old
- LOT 6 - Pairs, young
- LOT 7 - Female with offspring

OPEN CLASS ANIMALS

DEPARTMENT F RABBITS

Superintendents: Ashley Mead 208-627-8908

Entry Check In: Monday, August 7th, 3-6 pm
Entry Check Out: Saturday, August 12th, 7-9pm
See General Rules on pages 26-27

Premiums: 1st - \$3, 2nd - \$2, 3rd - \$1

- CLASS A - CROSSBREED
- CLASS B - ANY OTHER PUREBRED
- CLASS C - CHAMPAGN d' ARGENT
- CLASS D - DUTCH
- CLASS E - HOLLAND LOP
- CLASS F - ALL OTHER LOPS
- CLASS G - NETHERLAND DWARF
- CLASS H - REX
- CLASS I - MINI REX
- CLASS J - SILVER FOX

CLASS K - MEAT PEN—Three of any large breed, 3-5 lbs and 42 – 69 days old. Must be from same litter.

Classes will be made by breed with four or more entries in that breed and will be announced at the Fair. Breeds with less than four entries will be classed together as “Any Other Purebred.”

- LOT 1 - Senior Buck (over 6 months)
- LOT 2 - Intermediate Buck (Large Breed 6-8 months)
- LOT 3- Junior Buck (under 6 months)
- LOT 4- Senior Doe (over 6 months)
- LOT 5– Intermediate Doe (Large Breed 6-8 months)
- LOT 6 - Junior Doe (under 6 months)
- LOT 7 - Doe with litter
- SUBLOT A - FUR—for any class above

1. Entries must include ear number, division, class and lot for each entry. Contact the Superintendent with any questions about class designation for entries. Due to limited space, 4-H is given first priority.
2. All rabbits must be identified by a permanent tattoo, or identification written clearly in permanent marker, in the left ear. Freshly tattooed rabbits must have the excess ink removed before judging. Rabbits with illegible tattoos or marks may be eliminated at the discretion of the judge.
3. No doe with litter under 4 weeks is allowed to enter.



Gentle Shepherd Farm

Purebred Texel Sheep
Crossbred Texel / Hamp
Processed Cornish-Cross
Fryer Chickens

Tammy Hedrick
Bonnars Ferry, ID
GentleShepherdFarms@gmail.com
(208) 610-0154



DEPARTMENT G SHEEP

Superintendents: Tammy Hedrick 208 610-0154
Shelby Cowley 208 304-8974

Entry Check In: Monday, August 7th, 3-6 pm
Entry Check Out: Saturday, August 12th, 7-9 pm
See General Rules on pages 26-27

Premiums: 1st - \$5, 2nd - \$3, 3rd - \$2

- CLASS A - BLACK SHEEP
- CLASS B - CROSSBREDS
- CLASS C - OTHER PUREBREDS
- CLASS D - SUFFOLK
- CLASS E - WOOL BREEDS

- LOT 1 - Ram Lamb, under 1 year
- LOT 2 - Ram Yearling, 13 to 24 months
- LOT 3 - Ram, 2 years and over
- LOT 4 - Ewe Lamb, under 1 year
- LOT 5 - Ewe Yearling, 13 to 24 months
- LOT 6 - Ewe, 2 years and over
- LOT 7 - Market Lambs, not for auction

DEPARTMENT H SWINE

Superintendent: Jaycee Atkins 208-304-0344

Entry Check In: Monday, August 7th 3-6 pm
Entry Check Out: Saturday, August 12th, 7-9 pm
See General Rules on pages 26-27

Premiums: 1st - \$5, 2nd - \$3, 3rd - \$2

- CLASS A - CHESTER WHITE
- CLASS B - CROSSBREEDS
- CLASS C - DUROC
- CLASS D - HAMPSHIRE
- CLASS E - LANDRACE
- CLASS F - MARKET BARROW - all breeds
- CLASS G - YORKSHIRE
 - LOT 1 - Boar, 1 year or over
 - LOT 2 - Boar, under 1 year
 - LOT 3 - Sow, 1 year or over
 - LOT 4 - Sow, under 1 year
 - LOT 5 - Best Sow and Litter
 - Not less than 8 pigs under 8 weeks



DEPARTMENT J ART

Superintendent:

**Entry Check In: Monday, August 7th, 4-7 pm
and Tuesday, August 8th, 7-11:30 am**
Entry Check Out: Sunday, August 13th, 9-11 am
See General Rules on pages 26-27

Premiums: 1st - \$3, 2nd - \$2, 3rd - \$1

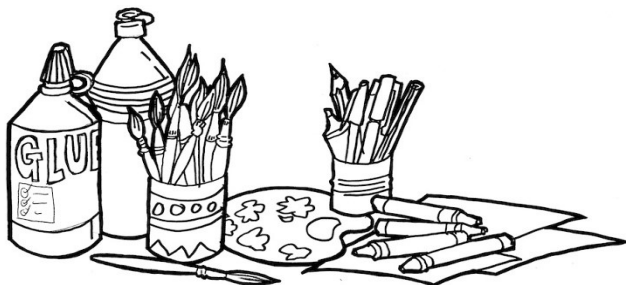
1. **All art must be ready to hang, whether framed, matted, or mounted on cardstock. Framed, heavy artwork must be properly equipped to hang using wire and hooks (no string and tape hooks). This applies to all divisions. No exceptions.**
2. **Original work only**
3. One entry to each class/lot.
4. Artists must have their names covered for judging.

- DIVISION A - 6 YEARS & UNDER
 DIVISION B - 7—9 YEARS
 DIVISION C - 10—12 YEARS
 DIVISION D - 13—17 YEARS
 DIVISION E - ADULTS 18—64 YEARS
 DIVISION F - SENIORS 65 YEARS & OVER
 DIVISION G - SPECIAL
 DIVISION H - PROFESSIONAL
 DIVISION I - EXPERIENCED ARTIST-Those who have painted 5 years or more.
 DIVISION J - NON-RESIDENT

- CLASS A - ACRYLIC
 CLASS B - CHARCOAL, PENCIL, PEN & INK
 CLASS C - CRAYON/MARKERS
 CLASS D - OIL PAINT/PASTEL
 CLASS E - PASTEL CHALK
 CLASS F - WATERCOLOR
 CLASS G - WATERCOLOR PENCIL/COLORED PENCIL
 CLASS H - MISCELLANEOUS/MIXED MEDIA

USE LOTS BELOW FOR CLASSES A - J

- LOT 1 - Abstract
- LOT 2 - Animal, Wildlife, Birds
- LOT 3 - Architecture, Building, Structure
- LOT 4 - Cartoon, Fantasy, Steam Punk
- LOT 5 - Floral, Still Life
- LOT 6 - Landscape, Seascape
- LOT 7 - Portrait
- LOT 8 - Transportation
- LOT 9 - Miscellaneous



Brian Wood
Owner

Concrete and Precast Products
Rock Crushing, Road Work
Sand and Gravel

B.F. Redi-Mix, Inc.

Chris Copley
Manager

P.O. Box M
6434 Arizona
Bonners Ferry, ID 83805
(208) 267-7559
C: (208) 290-7437
bfredimix@hotmail.com



SAGE
DIXON

IDAHO HOUSE
DISTRICT 1-B

“SEW IT, GROW IT, SHOW IT!”

SAGE DIXON is a proud Supporter of the
Boundary County Fair! Here's to great
success and a great time to all the
participants at the 2023 Bonner County Fair!



- [sagedixon.com](https://www.facebook.com/ElectSageDixon)
- sage@sagedixon.com
- 208.610.4800
- @votesagedixon
- [facebook.com/ElectSageDixon](https://www.facebook.com/ElectSageDixon)

Purebred

Texel Sheep



Shelby Cowley
208.304.8974

Bonnerr Ferry, Id 83805
shelbycowley@hotmail.com

DEPARTMENT K BAKED GOODS

Superintendent: Natalie Feuerstein 208 304-8772

**Entry Check In: Monday, August 7th, 4-7 pm
and Tuesday, August 8th, 7-11:30 am**

**Entry Check Out: Sunday, August 13th, 9-11 am
See General Rules on pages 26-27**

Premiums: 1st - \$3, 2nd - \$2, 3rd - \$1

DIVISION A - 6 yrs & Under

DIVISION B - 7-9 yrs

DIVISION C - 10-12 yrs

DIVISION D - 13-17 yrs

DIVISION E - ADULTS 18-64 yrs

DIVISION F - SENIORS 65 & older

DIVISION G - SPECIAL

DIVISION H - PROFESSIONAL

**No mini loaves or mini muffins. All cakes must be real. All
entries must be on a disposable board, pan or plate.**

All entries, except decorated cakes, are judged on appearance, texture and flavor.

Use sublots below for Classes A - Q

SUBLOT I - Gluten Free

SUBLOT II - Special Diet

CLASS A - YEAST BREAD

LOT 1 - White

LOT 2 - Whole Wheat

LOT 3 - Rye

LOT 4 - French

LOT 5 - Home Ground Wheat

LOT 6 - Other

CLASS B - YEAST ROLLS (plate of 4)

LOT 1 - Plain

LOT 2 - Fancy

LOT 3 - Whole Wheat-plain

LOT 4 - Sweet

LOT 5 - Other

CLASS C - MACHINE MADE BREAD - No box mixes

LOT 1 - White

LOT 2 - Whole Wheat

LOT 3 - Rye

LOT 4 - French

LOT 5 - Batter

LOT 6 - Other

CLASS D - SOURDOUGH

LOT 1 - Bread

LOT 2 - Rolls (plate or 4)

CLASS E - MUFFINS - No mini muffins (plate of 4)

LOT 1 - Fruit

LOT 2 - Other

CLASS F - BISCUITS/SCONES (plate of 4)

LOT 1 - Rolled

LOT 2 - Dropped

CLASS G - QUICK BREADS - No mini loaves
Judged on general appearance, size, uniform shape, crust,
crumb, grain, lightness, tenderness and flavor

LOT 1 - Banana

LOT 2 - Coffee Cake

LOT 3 - Nut

LOT 4 - Zucchini

LOT 5 - Sweet Rolls

LOT 6 - Other

CLASS H - BUTTER CAKES - Frosted

LOT 1 - White

LOT 2 - Yellow

LOT 3 - Spice

LOT 4 - Other

CLASS I - BUTTERLESS CAKES

LOT 1 - Angel

LOT 2 - Sponge

LOT 3 - Chiffon

CLASS J - OTHER CAKES

LOT 1 - Fruit

LOT 2 - Other

CLASS K - I STARTED WITH A MIX - Must include recipe
with mix used

LOT 1 - White

LOT 2 - Yellow

LOT 3 - Spice

LOT 4 - Chocolate

CLASS L - BROWNIES (plate of 4)

CLASS M - CUPCAKES (plate of 4)

CLASS N - DOUGHNUTS (plate of 4)

Judged by: Appearance, texture, and flavor

LOT 1 - Yeast

LOT 2 - Cake

CLASS O - PIES (NO CREAM, NO MERINGUE PIES)

Judged on appearance, flaky crust, texture, and flavor

Not responsible for return of pan

LOT 1 - One Crust

LOT 2 - Two Crust

CLASS P - COOKIES (plate of 4)

Judged on general appearance, uniform shape, delicate brown
texture and flavor

CLASS Q - CRISPS/CRACKERS (plate of 4)

CLASS R - CANDY (4 pieces)

LOT 1 - Fudge, Old fashioned

LOT 2 - Fudge, Quick

LOT 3 - Divinity

LOT 4 - Peanut Brittle

LOT 5 - Caramel

LOT 6 - Other

CLASS S - DECORATED CAKES

**All cakes to be real. Judged separately from other baked
goods. Judged on appearance and not taste. All cakes
must be on a disposable, hard surfaced board or pan no
wider than 12 inches and no higher than 10 1/2 inches to fit
the display case.**

LOT 1 - Theme

LOT 2 - Holiday

LOT 3 - Toy

LOT 4 - Wedding

LOT 5 - Other Decorated Cakes

BAKED GOODS AUCTION

All Baked Goods entries winning Best of Class will be auctioned off to the highest bidder during Opening Ceremonies Baked Goods Auction. A photo of the winning entries will be left in the Exhibit Hall for display.
2022 AUCTION brought in \$625
These funds helped to update the electrical in the food court area.
Thank you for your donations for the auction!

DEPARTMENT L CONSTRUCTS

Superintendent: Theresa Carmine 208 597-4422

**Entry Check In: Monday, August 7th, 4-7 pm
and Tuesday, August 8th, 7-11:30 am**

**Entry Check Out: Sunday, August 13th, 9-11 am
See General Rules on pages 26-27**

Premiums: 1st - \$3, 2nd - \$2, 3rd - \$1

DIVISION A - 6 yrs & Under
DIVISION B - 7-9 yrs
DIVISION C - 10-12 yrs
DIVISION D - 13-17 yrs
DIVISION E - ADULTS 18-64 yrs
DIVISION F - SENIORS 65 & over
DIVISION G - SPECIAL
DIVISION H - PROFESSIONAL

ALL displays MUST be entered on a hard portable surface. Entries cannot exceed 12" wide x 18" long due to display restrictions.

LEGOS AND DUPLOS PIECES SHOULD NOT BE MIXED IN ONE ENTRY, PLEASE KEEP SEPARATE ENTRIES FOR EACH

**Subdivisions: 1) Kit
2) Original**

CLASS A - LEGOS
LOT 1 - Still
LOT 2 - Motorized
LOT 3 - In a setting
LOT 4 - Lighted Display
CLASS B - DUPLOS
LOT 1 - Still
LOT 2 - Motorized
LOT 3 - In a setting
LOT 11 - Other

CLASS C - K-NEX
LOT 1 - Still
LOT 2 - Motorized
LOT 3 - In a setting
CLASS D - ERECTOR
LOT 1 - Still
LOT 2 - Motorized
LOT 3 - In a setting
CLASS E - TECHNIQUES
LOT 1 - Still
LOT 2 - Motorized
LOT 3 - In a setting
CLASS F - MODELS
a) still b) motorized
LOT 1 - Model boats
LOT 2 - Model cars
LOT 3 - Snap tight cars
LOT 4 - Model planes
LOT 5 - Model trucks
LOT 6 - Snap tight trucks
LOT 7 - Models in a setting
LOT 8 - Motorcycles
LOT 9 - Rockets
LOT 10 - Trains
LOT 11 - Other
CLASS G - CONSTRUCTS
CLASS H - OTHER





THICK 'n' THIN Beams & Flooring

4355 COW CREEK ROAD
BONNERS FERRY, IDAHO 83847

GARY & BRANDON REGEHR

MILL OFFICE (208) 267-1330	FAX (208) 267-2982
GARY'S CELL (208) 290-1329	BRANDON'S CELL (208) 290-1334

TNTBEAMS.COM

BRING THE BEAUTY OF OUR CUSTOM CUT WOOD INTO YOUR LIFE

DEPARTMENT M CRAFTS & HOBBIES

Superintendent: Shelli Cowell 425-563-8161

**Entry Check In: Monday, August 7th, 4 -7 pm
and Tuesday, August 8th, 7-11:30 am**

**Entry Check Out: Sunday, August 13th, 9-11 am
See General Rules on pages 26-27**

Premiums: 1st - \$3, 2nd - \$2, 3rd - \$1

DIVISION A - 6 yrs & Under
DIVISION B - 7-9 yrs
DIVISION C - 10-12 yrs
DIVISION D - 13-17 yrs
DIVISION E - ADULTS 18-64 yrs
DIVISION F - SENIORS 65 & over
DIVISION G - SPECIAL
DIVISION H - PROFESSIONAL

Crafts must have been made within the last year.

**Subdivisions: 1) Kit or plans
2) Original**

CLASS A - BEADWORK AND JEWELRY

LOT 1 - Freeform beadwork
LOT 2 - Loom beadwork
LOT 3 - Surface beadwork
LOT 4 - Wirework
LOT 5 - Earrings
LOT 6 - Necklaces
LOT 7 - Bracelets
LOT 8 - Sets
LOT 9 - Other

CLASS B - CERAMICS

LOT 1 - Stains
LOT 2 - Underglazed
LOT 3 - Glazed
LOT 4 - Overglazed
LOT 5 - Porcelain
LOT 6 - Stoneware
LOT 7 - Other

CLASS C - POTTERY

Use the following sublots for Class C

a) Coiled
b) Slab
c) Molded
d) Pinched
e) Wheel thrown
f) Combination

LOT 1 - Glazed
LOT 2 - Unglazed

CLASS D - CLAY - Oven bake or air dry

LOT 1 - Dough sculpture
LOT 2 - Oven bake sculpture
LOT 3 - Air dry sculpture
LOT 4 - Paper mache'
LOT 5 - Plaster craft
LOT 6 - Other

CLASS E - DECORATIVE PAINTING

LOT 1 - Painted on wood
LOT 2 - Painted on metal
LOT 3 - Painted on recycled item
LOT 4 - Painted on natural item
LOT 5 - Other

CLASS F - DOLLS AND TOYS

LOT 1 - Porcelain
LOT 2 - Composition
LOT 3 - Soft sculpture
LOT 4 - Stuffed
LOT 5 - Doll clothes
LOT 6 - Other

CLASS G - GLASS

LOT 1 - Etched glass
LOT 2 - Painted glass
LOT 3 - Stained glass
LOT 4 - Fused glass
LOT 5 - Other

CLASS H - METAL

LOT 1 - Etched
LOT 2 - Fabricated
LOT 3 - Forged
LOT 4 - Punched or embossed
LOT 5 - Other

CLASS I - MINIATURES

LOT 1 - Furniture
LOT 2 - Accessories
LOT 3 - Diorama
LOT 4 - Dollhouse
LOT 5 - Other

CLASS J - CRAFTS FROM NATURE

LOT 1 - Antlers
LOT 2 - Basketry
LOT 3 - Dried arrangements
LOT 4 - Pine needle art
LOT 5 - Taxidermy
LOT 6 - Tied flies
LOT 7 - Other

CLASS K - PAPER CRAFTS

LOT 1 - Embossing
LOT 2 - Stamping
LOT 3 - Memory books
LOT 4 - Stationary
LOT 5 - Other

CLASS L - WOODWORKING

LOT 1 - Carving
LOT 2 - Inlay
LOT 3 - Lathe work
LOT 4 - Scroll saw
LOT 5 - Wood burning
LOT 6 - Small constructions
LOT 7 - Large constructions
LOT 8 - Other



**DEPARTMENT M
CRAFTS & HOBBIES**

CLASS M - MISCELLANEOUS CRAFTS

- LOT 1 - Candles
- LOT 2 - Collage
- LOT 3 - Collections
- LOT 4 - Leatherwork
- LOT 5 - Macramé
- LOT 6 - Plastic canvas
- LOT 7 - Recycled crafts - **List the initial recycled item used**
- LOT 8 - Artificial flower arrangements
- LOT 9 - Woven
- LOT 10 - Wooden craft sticks
- LOT 11 - Holiday
- LOT 12 - Other

CLASS N - SOAP - 3 bars or one jar

- LOT 1 - Chips

**BOUNDARY COMMUNITY HOSPITAL
AUXILIARY**

MAKE A DIFFERENCE...

VOLUNTEER!

**SUPPORTING OUR HOSPITAL SINCE
1953**

(208) 267-6912



www.boundarycommunityhospital.org/about-us/auxiliary/



DEPARTMENT N FLOWERS

**Superintendent: Tess Wagner 208 267-2502
Leilani Cummings 208 582-4867**

**Entry Check In: Monday, August 7th, 4-7 pm
and Tuesday, August 8th, 7-11:30 am
Entry Check Out: Sunday, August 13th, 9-11 am
See General Rules on pages 26-27**

Premiums: 1st - \$3, 2nd - \$2, 3rd - \$1

DIVISION A - 6 yrs & Under
DIVISION B - 7-9 yrs
DIVISION C - 10-12 yrs
DIVISION D - 13-17yrs
DIVISION E - ADULTS 18-64 yrs
DIVISION F - SENIOR 65 & over
DIVISION G - SPECIAL
DIVISION H - PROFESSIONAL

SPECIMEN EXHIBITS - 3 Stems unless otherwise noted and must be grown by exhibitor. Limit Two Entries Per Lot

1. Please use a clear glass container for specimen exhibits; the Fair will furnish containers if needed.
2. Flowers will be entered outside the Exhibit Hall on facilities furnished.
3. All foliage under the water line needs to be removed; **please cut stems long.**
4. Accessories not permitted except in certain arrangement categories (Class A, Lot 1-3,10-11)
5. No plastic, feather or silk flowers permitted.
6. Flowers and plants in **ALL** classes are to be grown by the **exhibitor**, except **IN PROFESSIONAL DIVISION ONLY.**
7. Give the name of the flower(s) exhibited.
8. **If your specimen wilts/dries, you are encouraged to replace it after judging.** If insect infested, the flowers will be removed by a Superintendent.
9. Juniors (17 and under) and Seniors (65 years and over) may enter in one division only and need to mark their tags accordingly.
10. **PROFESSIONAL ONLY CLASS A** does not have to be grown by exhibitor.

CLASS A - ARRANGEMENTS

- LOT 1 - Fair Theme
- LOT 2 - Harvest Theme - Using fruit, grain, vegetables & flowers, **MUST HAVE** all 4.
- LOT 3 - Theme
 - a) Birthdays
 - b) Weddings
 - c) Holiday
 - d) Recycled container
 - e) Other
- LOT 4 - Centerpiece
 - a) Formal
 - b) Informal garden bouquet
- LOT 5 - Color Harmony: flowers all one color
- LOT 6 - Corsage/Boutonniere
- LOT 7 - Dried Arrangement
- LOT 8 - Floating Flowers
- LOT 9 - Miniatures
 - a) Under 3"
 - b) 3" - 5"
- LOT 10 - One Flower Arrangement - outside accessories that develop a form or a line, and must show a focal point line
- LOT 11 - Oriental
- LOT 12 - Terrarium
- LOT 13 - Wild Crafted- Fresh/Dried
- LOT 14- Other

CLASS B1 - AMARANTHUS

CLASS B2 - ASTERS

- LOT 1 - Annual
 - a) Double
 - b) Single
 - c) Spider/Quilled
 - d) Mixed
- LOT 2 - Perennial

CLASS B3 - BEGONIAS - All lots, single stem; must be exhibit ed with leaf attached.

- LOT 1 - Fibrous
 - a) Wax - Bedding plant, small flower singles
 - b) Angle Wing
- LOT 2 - Tuberous
 - a) Upright
 - b) Hanging
- LOT 3 - Rhizomatous

CLASS B4 - CALLA

- LOT 1 - Single stem
- LOT 2 - Mixed colors

CLASS B5 - CALENDULA

CLASS B6 - CAMPANULA

- LOT 1 - Canterbury Bells
- LOT 2 - Other

CLASS B7 - CANA

CLASS B8 - CENTAUREAS

- LOT 1 - Bachelor Buttons
- LOT 2 - Other

CLASS B9 - CHRYSANTHEMUM

- LOT 1 - Cushion Mums
- LOT 2 - Tall mums
- LOT 3 - Large flowered - Football type
- LOT 4 - Mum collection, (5 varieties/5 stems)
- LOT 5 - Painted Daisy
- LOT 6 - Shasta Daisy

CLASS B10 - CONE FLOWER

CLASS B11 - COREOPSIS

- LOT 1 - Annual
- LOT 2 - Perennial



- CLASS B12 - COSMOS (All 3 sprays with buds)
 LOT 1 - Cosmos, common
 LOT 2 - Cosmos, yellow/orange
 LOT 3 - Cosmos, mixed
 LOT 4 - Other
- CLASS B13 - DAHLIAS (All single stem)
 LOT 1 - Anemone - One or more rows of ray florets around a center of elongated disc florets
 LOT 2 - Ball, 2" and up
 LOT 3- Cactus
 a) Incurved
 b) Semi-cactus
 c) Straight
 LOT 4 - Collarette - Open centered with single row of petals, small petaloid around central disk
 LOT 5- Dinner Plate - All types over 8"
 LOT 6 - Fimbriated or Laciniate
 LOT 7 - Formal Decorative - Flat petals uniform and regularly arranged tending to curve toward stem
 a) Under 4"
 b) 4" - 6"
 c) 6" - 8"
 LOT 8 - Informal Decorative - Petals twisted, curled or wavy, arranged irregularly
 a) under 4"
 b) 4" - 6"
 b) 6" - 8"
 LOT 9 - Pom Pom, Under 2 inches
 LOT 10 - Semi-double (Peony)
 LOT 11 - Single
 LOT 12 - Water lily
 LOT 13 - Collection (5 Stems)
 a) One Color
 b) Mixed Colors
 LOT 14 - Other
- CLASS B14 - DAYLILY (3+ stems)
 LOT 1 - Same color
 LOT 2 - Mixed colors
- CLASS B15 - DELPHINIUM
- CLASS B16 - DIANTHUS
 LOT 1 - Carnation
 LOT 2 - Pinks, annual
 LOT 3 - Pinks, perennial
 LOT 4 - Sweet William
- CLASS B17 - EVERLASTING (3 sprays/stems)
 LOT 1 - Baby's Breath
 a) Annual
 b) Perennial
 LOT 2 - Bells of Ireland
 LOT 3 - Globe Thistle
 LOT 4 - Gomphrena
 LOT 5 - Ornamental grass
 LOT 6 - Statice
 a) Annual
 b) German
 c) Sea Lavender
 LOT 7 - Strawflowers
 LOT 8 - Other
- CLASS B18 - GAILLARDIA
- CLASS B19 - GERANIUM (PELARGONIUM)
 LOT 1 - Ivy
 LOT 2 - Upright
- CLASS B20 - GERANIUM (HARDY PERENNIAL)
- CLASS B21 - GLADIOLA (1 Spike, 3 open blossoms min)
 LOT 1 - Butterfly Miniature
 LOT 2 - Large flowered
 LOT 3 - Perennial - Hardy dwarf/orchid gladiola
 LOT 4 - Collection (3 spikes of one color)
 LOT 5 - Collection (5 different colors)
- CLASS B22- HOLLYHOCK (1 stem, 3 blooms minimum)
 LOT 1 - Single
 LOT 2 - Double
- CLASS B23 - HYDRANGEA
 LOT 1 - Any color (1 bloom)
- CLASS B24 - LARKSPUR
 LOT 1 - One color
- CLASS B25 - LILY (1 Stem)
 LOT 1 - Asiatic
 LOT 2 - Oriental
 LOT 3 - Tiger
 LOT 4 - Trumpet
- CLASS B26 - MARIGOLD - Minimum 3" Stem
 LOT 1 - Double large
 LOT 2 - Double dwarf
 LOT 3 - French
 LOT 4 - Single
 LOT 5 - Signet/fern leaf
 LOT 6 - Spray
- CLASS B27 - NASTURTIUM (5 stems)
 LOT 1 - One color with foliage
 LOT 2 - Mixed colors with foliage
- CLASS B28 - PANSY (5 blooms-long stems please)
 LOT 1 - Pansy
 a) One color
 b) Mixed color
 LOT 2 - Viola
 a) One color
 b) Mixed colors
- CLASS B29- PETUNIA (3 sprays 1 color)
 LOT 1 - Single
 LOT 2 - Double
 LOT 3 - Mixed colors (3+ sprays)
- CLASS B30 - PHLOX, (Single stem)
 LOT 1 - Annual
 LOT 2 - Perennial
- CLASS B31 - *ROSE
(1/4 to 1/2 open, NOT FULL) All with foliage on; single stems unless otherwise noted; a spray is one stem with 3 or more blooms.
 LOT 1 - Antique/Old Garden
 LOT 2 - Climbing (1 spray)
 LOT 3 - Floribunda - Over 2", (1 spray)
 LOT 4 - Grandiflora
 LOT 5 - Hybrid Tea
 LOT 6 - Miniature (1 spray)
 LOT 7 - Polyantha - Under 2", (1 spray)
 LOT 8 - Shrub Rose
 a) English
 b) Hardy shrub (Rugosas, Explorers, Meidilands, etc)
 LOT 9 - Collection, mixed colors (5+ stems)
- CLASS B32- RUDBECKIA/GLORIOSA DAISY
 LOT 1 - Annual
 LOT 2 - Perennial
 LOT 3- Collection (3 stems)

CLASS B33 - SALVIA

- LOT 1 - Annual
- LOT 2 - Perennial

CLASS B34 - SCABIOSA

- LOT 1 - Annual
- LOT 2 - Perennial

CLASS B35- SNAPDRAGONS

- LOT 1 - Butterfly
- LOT 2 - Dwarf
- LOT 3 - Tall, Old-fashioned
- LOT 4 - Mixed (5 stems)

CLASS B36 - STOCK

CLASS B37 - SUNFLOWERS (3 flowers), remove excess unopened buds

- LOT 1 - Under 4"
- LOT 2 - 4" - to 6"
- LOT 3 - 6" - to 10"
- LOT 4 - Over 10"
- LOT 5 - Mixed (3+ stems)
- LOT 6 - Perennial

CLASS B38 - SWEET PEA

- LOT 1 - One color (5 stems)
- LOT 2 - Mixed colors (5 stems)

CLASS B39 - VINES - All lots (1 spray or 3 blooms)

- LOT 1 - Annual
 - a) Morning Glory
 - b) Runner Bean
 - c) Other

CLASS B39 - VINES (cont.)

- LOT 2 - Perennial
 - a) Clematis
 - b) Honeysuckle
 - c) Trumpet Vine
 - d) Other

CLASS B40 - ZINNIA (3 blooms 1 color)

- LOT 1 - 2" and under
- LOT 2 - 2" - 4"
- LOT 3 - over 4"

LOT 4 - Mixed colors (5 + stems)

CLASS B41 MISCELLANEOUS/NEW

CLASS C - HOUSEPLANTS

- LOT 1 - African Violets
- LOT 2 - Begonias
- LOT 3 - Cactus/succulent
- LOT 4 - Ferns
- LOT 5 - Flowering -In bloom (Please Identify)
- LOT 6 - Foliage
 - a) Trailing
 - b) Upright

LOT 7 - Dish Garden (5 different plants)

LOT 8 - Other - PLEASE IDENTIFY

CLASS D - OUTDOOR POTTED PLANTS

- LOT 1- Single Pot Plant
- LOT 2 - Combination Pot (3+ different plants)
- LOT 3 - Outdoor Hanging Basket
- LOT 4 - Perennial
- LOT 5- Tree or Shrub
 - a) Blooming
- LOT 6- Other (Please Identify)



*Located in pristine
Naples, Idaho*

Bringing hearts together since 2007, The Great Northwest Territories was built on a dream to bring North Idaho a wedding and event venue like none other.

- *Weddings*
- *Corporate events*
- *Anniversaries*
- *Beautiful modern facility*
- *Family operated*
- *Mountain setting*

(208) 946-0222 | 998 Mountain Meadows Rd, Naples, Idaho | greatnwterritories.com | brenda.liermann@live.com

DEPARTMENT O FRUITS and NUTS

Superintendent: Angie Schnuerle 208 597-6307

**Entry Check In: Monday, August 7th, 4-7 pm
and Tuesday, August 8th, 7-11:30 am**

**Entry Check Out: Sunday, August 13th, 9-11 am
See General Rules on pages 26-27**

Premium: 1st - \$3, 2nd - \$2, 3rd - \$1

DIVISION A - 6 yrs & Under

DIVISION B - 7-9 yrs

DIVISION C - 10-12 yrs

DIVISION D - 13-17 yrs

DIVISION E - ADULT 18-64 yrs

DIVISION F - SENIORS 65 & over

DIVISION G - SPECIAL

DIVISION H - PROFESSIONAL

1. The Fair will furnish flats and plates where called for.
2. **Select only fruits and nuts that are uniform in shape and size and free from blemishes. Wash, but do not scrub.**
3. **All class lots to have stems remaining on exhibit unless noted otherwise.**
4. All entries must be grown and prepared for entry by the exhibitor.
5. Variety, if known, should be listed on the entry tag.

CLASS A - APPLES (Plate of 5, except crab)

LOT 1 - Crabapple (Plate Of 10)

LOT 2 - Delicious, Golden

LOT 3 - Delicious, Red

LOT 4 - Jonathan

LOT 5 - Macintosh

LOT 6 - Rome

LOT 7 - Wealthy

LOT 8 - Yellow Transparent

LOT 9 - Lodi

LOT 10 - Other

CLASS B - APRICOTS (Plate of 5)

CLASS C - BERRIES

LOT 1 - Blackberries, 10

LOT 2 - Raspberries, 10

a) Red

b) White

LOT 3 - Strawberries, 10

LOT 4 - Huckleberries, 10

LOT 5 - Blueberries, 10

LOT 6 - Other, 10

CLASS D - GRAPES (1 bunch)

CLASS E - PEACHES (Plate of 5, no stems)

CLASS F - PEARS (Plate of 5)

LOT 1 - Bartlett

LOT 2 - Other

CLASS G - PLUMS/PRUNES (Plate of 5)

LOT 1 - Plum

LOT 2 - Prunes, Italian

LOT 3 - Prunes, Petite

LOT 4 - Other

CLASS H - MELONS

LOT 1 - Cantaloupe

LOT 2 - Honeydew

LOT 3 - Watermelon - Stem not to exceed 2"

LOT 4 - Other

CLASS I - TOMATOES (Plate of 3)

LOT 1 - Red, Cherry

LOT 2 - Red, Beefsteak

LOT 3 - Red, Plum/paste

LOT 4 - Red, Other

LOT 5 - Green, Beefsteak

LOT 7 - Green Plum/paste

LOT 8 - Yellow

LOT 9 - Grape

LOT 10 - Other

LOT 11 - Orange, Cherry

LOT 12 - Tomatillo

CLASS J - NECTARINE (Plate of 5)

CLASS K - LARGEST FRUIT

CLASS L - SEEDS

LOT 1 - Sunflower (1 head 6" stem)

LOT 2 - Sunflower (1 pint, dried)

LOT 3 - Pumpkin (1 pint, dried)


CLASS M - NUTS

LOT 1 - Any fresh variety, (one pint, husks on)

LOT 2 - Any dry variety, including a sample of nut meat from at least three nuts (hulled) in exhibit

a) filberts

b) walnuts



POINTS NORTH ORCHARD

POINTS NORTH ORCHARD
Naturally Grown Fruit
from the Kootenai Valley

Larry & Robin Lammers
208-267-2375
406-295-2344

309 Pywell Road ~ Bonners Ferry, Idaho

In Season dates: Cherries-end of June to 1st of August, Apricots-2nd week of July to 1st week of August, Peaches-1st week of August-Mid September, Apples-1st of Sept. to Christmas

DEPARTMENT P FOOD PRESERVATION

Superintendents: Carolyn McNeill 208 267-1997

**Entry Check In: Monday, August 7th, 4-7 pm
and Tuesday, August 8th, 7-11:30 am**
Entry Check Out: Sunday, August 13th, 9-11 am
See General Rules on pages 26-27

Premiums: 1st - \$3, 2nd - \$2, 3rd - \$1

DIVISION A - 6 yrs & Under
DIVISION B - 7-9 yrs
DIVISION C - 10-12 yrs
DIVISION D - 13-17 yrs
DIVISION E - ADULT 18-64 yrs
DIVISION F - SENIORS 65 & over
DIVISION G - SPECIAL
DIVISION H - PROFESSIONAL

All entries will be judged for:

*Appearance	*Head Space
*Processing - hot water/pressure	*Rust on lid or ring
*Time allowance for altitude	*Recipe

SEE FOOD PRESERVATION RULES FOR DETAILS

CLASS A - FRUITS

LOT 1 - Apricots
LOT 2 - Applesauce
LOT 3 - Blueberries
LOT 4 - Cherries, Pie
LOT 5 - Cherries, Sweet
LOT 6 - Huckleberries
LOT 7 - Peaches
LOT 8 - Pears
LOT 9 - Raspberries
LOT 10 - Tomatoes
a) stewed

CLASS B - JUICES

LOT 1 - Apple
LOT 2 - Grape
LOT 3 - Other

CLASS C - PIE FILLING: INCLUDE RECIPE

(see page 57 for label example)

LOT 1 - Apple
LOT 2 - Blueberry
LOT 3 - Cherry
LOT 4 - Other

CLASS D - VEGETABLE

LOT 1 - Beans
a) whole
b) cut
LOT 2 - Beets
LOT 3 - Carrots
LOT 4 - Corn
LOT 5 - Peas
LOT 6 - Other

CLASS E - MEATS

LOT 1 - Chicken
LOT 2 - Beef
LOT 3 - Fish
LOT 4 - Wild Game
LOT 5 - Pork

CLASS F - PICKLING: INCLUDE RECIPE

LOT 1 - Asparagus Pickles
LOT 2 - Beet Pickles
LOT 3 - Bread and Butter
LOT 4 - Dilled Pickles
a) Cucumbers
b) Green Beans
c) Mixed Vegetables
d) Garlic
1) whole
2) cut

LOT 5 - Sweet Pickles

LOT 6 - Pickled Fruit

LOT 7 - Other

CLASS G - SAUERKRAUT

CLASS H - DRIED FRUIT; List any pre-treatment on label for all dehydrated foods

LOT 1 - Apricots
LOT 2 - Apples
LOT 3 - Pears
LOT 4 - Raisins
LOT 5 - Tomatoes
LOT 6 - Cherries

a) Bing
b) Other

LOT 7 - Other

CLASS I - DRIED VEGETABLES

LOT 1 - Beans
LOT 2 - Mushrooms
LOT 3 - Potatoes
a) Sliced
b) Hashbrowns
LOT 4 - Zucchini
LOT 5 - Other

CLASS J - DRIED HERBS - Must be edible

LOT 1 - Basil
LOT 2 - Garlic
LOT 3 - Oregano
LOT 4 - Parsley
LOT 5 - Other

CLASS K - LEATHER

LOT 1 - Apple
LOT 2 - Apricot

CLASS L - JELLIES; INCLUDE RECIPE. Must be processed and sealed with a standard two piece lid.

LOT 1 - Apple
LOT 2 - Apricot
LOT 3 - Blackberry
LOT 4 - Huckleberry
LOT 5 - Grape
LOT 6 - Raspberry
LOT 7 - Mixed
LOT 8 - Other

**DEPARTMENT P
FOOD PRESERVATION (cont.)**

CLASS M - JAMS INCLUDE RECIPE

- LOT 1 - Apricot
- LOT 2 - Blackberry
- LOT 3 - Huckleberry
- LOT 4 - Peach
- LOT 5 - Raspberry
- LOT 6 - Strawberry
- LOT 7 - Cherry
- LOT 8 - Mixed
- LOT 9 - Freezer
 - a) Strawberry
 - b) Raspberry
 - c) Other
- LOT 10 - Conserves
- LOT 11 - Other

CLASS N - FRUIT BUTTER

CLASS O - SYRUP - Only Berry

- LOT 1 - Raspberry
- LOT 2 - Blueberry
- LOT 3 - Other

CLASS P - SPECIAL DIETS INCLUDE RECIPE.

- LOT 1 - Fruits
- LOT 2 - Jam
- LOT 3 - Jelly
- LOT 4 - Pickles
- LOT 5 - Vegetable

CLASS Q - SOUPS

- LOT 1 - Broth
- LOT 2 - Other

CLASS R - CONDIMENTS AND SAUCES

INCLUDE RECIPE

- LOT 1 - Salsa - frozen or canned
 - a) Tomato
 - b) Fruit
- LOT 2 - Relish
- LOT 3 - Catsup
- LOT 4 - Pesto
 - a) Tomato
 - b) Fruit
- LOT 5 - Sweet Toppings
- LOT 6 - BBQ
- LOT 7 - Chutney
- LOT 8 - Other

CLASS S- FREEZE DRIED

- LOT 1- Fruits
 - a) Apples
 - b) Berries
 - c) Other
- LOT 2- Vegetables
 - a) Beans
 - b) Broccoli
 - c) Mixed
 - d) Other
- LOT 3- Meats
- LOT 4- Dairy
- LOT 5- Other

FOOD PRESERVATION RULES

To prevent disqualification, please follow rules carefully

1. All canned foods must be processed in **standard clear glass, non-vented canning jars** with self-sealing, two piece lids. Screw bands must be attached.
2. **All canning jars must be labeled with:**
 - A. Hot or raw pack
 - B. Type of processing (boiling water or pressure- if pressure, how many pounds and dial or weighted gauge).
 - C. Time of process with altitude adjustment for this area (1,000 - 3,000 feet).
3. Entries will not be opened for judging. **NOTE - freezer jams and freeze dried entries will be opened and then refrigerated**
4. Jars must have a vacuum seal. Jars will be exhibited with rings. Rings will be removed for judging and must not be old, dented or rusty. Jars should not be sticky or dirty on outside.
5. All canned foods will be judged on correct processing times, appearance of product, uniformity of size and shape, color, clearness of liquid, arrangement, selection of product and correct container. Must follow current USDA/PNW recommendations. Visit: nchfp.uga.edu/publications/publications_usda.html for USDA/PNW publications and updates.
6. All canning, except plain fruits and vegetables, must have ingredients and amounts listed. Please attach label with string or rubber band. Do not put information on fair exhibit tag.
6. Appropriate head space requirements:
 - *Fruits - 1/2 inch
 - *Vegetables - 1/2-1 inch
 - *Jams and Jellies - 1/4 inch
 - *Pickles - 1/2 inch
 - *Meats - 1-1 1/2 inches
8. The size of canning jar and product must meet USDA guidelines:
 - *Fruits, vegetables - pint or quart (exception: corn only in a pint jar)
 - *Juices - pint, quart or half gallon
 - *Jams and Jellies - half pint or pint
 - *Fish - Half pint or pint
 - *Meat - pint or quart
 - *Pickles - half pint, pint or quart
9. Dried fruits and vegetable (including mushrooms) may be in plastic bags or jars with rings. List any pretreatment on label for all dehydrated products.
10. **THE FOLLOWING ENTRIES WILL BE DISQUALIFIED**
 - *Foods processed and packed not following current USDA/ PNW recommendations
 - *Paraffin sealed jams and jellies
 - *Jars with zinc lids
 - *Foods in green glass jars or non-standardized jars
 - *Foods that have been improperly processed or packed jars with more than 2" head space
 - *Jars with added bleach, sulfite or other preservatives (for example: baking soda may not be added to green vegetables and acids may not be added to non-pickled foods with exception of tomatoes and figs).
 - *Not properly labeled

Farm to Market Grains

Stone Ground Flour

From our Family Farm in the Kootenai Valley
to your Family's Table

We Grow It, Mill It, and Bag It



BONNERS FERRY



GLASS & DOOR CO.

Glass & Glazing /
Commercial & Residential
Windows, Doors,
Garage Doors /
Lock Smithing
(after hrs 208-267-8688)

Auto Glass / All Types of Glass / Mirrors

6821 Main Street, P.O. Box 217, Bonners Ferry, ID 83805

(208) 267-3195 or 1-800-842-0982

Fax (208) 267-5142

DEPARTMENT Q GARMENTS AND ACCESSORIES

(Sewn, Knitted, Crocheted, Embellished, Woven and
Other Handwork)

Superintendents: **Jordan Burt 360-780-0703**

**Entry Check In: Monday, August 7th, 4-7 pm
and Tuesday, August 8th, 7-11:30 am**

**Entry Check Out: Sunday, August 13th, 9-11 am
See General Rules on pages 26-27**

Premiums: 1st - \$3, 2nd - \$2, 3rd - \$1

DIVISION A - 6 yrs & Under

DIVISION B - 7-9 yrs

DIVISION C - 10-12 yrs

DIVISION D - 13-17 yrs

DIVISION E - ADULTS 18-64 yrs

DIVISION F - SENIORS 65 & over

DIVISION G - SPECIAL

DIVISION H - PROFESSIONAL

**FOR ALL BELOW: K) - FROM KIT OR PLANS
S) - ORIGINAL**

Use the following subplot for all classes

a. Theme

CLASS A - CROCHETED

CLASS B - CROCHETED HANDSPUN

CLASS C - HAND-KNITTED

CLASS D - MACHINE KNITTED

CLASS E - SEWN

CLASS F - WOVEN

CLASS G - MACHINE EMBROIDERED

CLASS H - EMBELLISHED COMMERCIAL GARMENT

CLASS I - MULTI-TECHNIQUE

CLASS J - RECYCLED

USE LOTS BELOW FOR CLASSES A - J

LOT 1 - Infant's Garments

LOT 2 - Children's Garments

LOT 3 - Women's Garments

LOT 4 - Men's Garments

LOT 5 - Other

USE SUBLOTS BELOW FOR CLASSES A-J

SUBLOT a) - sweater

SUBLOT b) - bulky sweater

SUBLOT c) - patterned sweater

SUBLOT d) - jacket

SUBLOT e) - lined jacket

SUBLOT f) - pants

SUBLOT g) - shirt or blouse

SUBLOT h) - dress, daywear

SUBLOT i) - dress, nightwear

SUBLOT j) - infant set

SUBLOT k) - apron

SUBLOT l) - back pack

SUBLOT m) - booties

SUBLOT n) - collar

SUBLOT o) - gloves

SUBLOT p) - hat

SUBLOT q) - mittens

SUBLOT r) - purse or tote bag

SUBLOT s) - scarf

SUBLOT t) - shawl

SUBLOT u) - slippers

SUBLOT v) - other

SUBLOT w) - toys

SUBLOT x) - hand dyed

SUBLOT y) - Jewelry Organizer



Sewing Machine Give Away 2023

Endeavoring to encourage the sewing arts, 9B Quilters will be awarding one sewing machine to one Boundary County youth, ages 8-17. Machine will be awarded during the October 13-14, 2023 Quilt Show. All Boundary County Youth are eligible to fill out an application.

Applications are due August 31, 2023. Applications are available at the fair office, Stitchin Dreams, or Pam's

Little Comfort Quilt Shop. Instructions are on the application. Questions contact Carol Jean Hubbard 208-267-3206

9B Quilters is a group of women who share the love of quilts. We are a nonprofit organization without fees or elected officers. Anyone can be part of the group. We meet once a month to share ideas and sew.

We strive to give back to the community in many ways. Find us on 9B Quilters Facebook page



**THE BEST
AGRONOMY
TEAM IN
THE PNW**

**DEDICATED TO
REALIZING YOUR FARM'S
FULL POTENTIAL**

Dedicated People Who Care.



Bonnors Ferry 208-267-7473

WWW.MCGREGOR.COM

DEPARTMENT R HOME PRODUCTS

Superintendent: Tracy Roemer 360-201-8837
Kim Sheets 206-947-2614

**Entry Check In: Monday, August 7th, 4-7 pm
and Tuesday, August 8th, 7-11:30 am**
Entry Check Out: Sunday, August 13th, 9-11 am
See General Rules on pages 26-27

Premiums: 1st - \$3, 2nd - \$2, 3rd - \$1

DIVISION A - 6 yrs & Under
DIVISION B - 7-9 yrs
DIVISION C - 10-12 yrs
DIVISION D - 13-17 yrs
DIVISION E - ADULTS 18-64 yrs
DIVISION F - SENIORS 65 & over
DIVISION G - SPECIAL
DIVISION H - PROFESSIONAL

No labels on bottles or jars.

CLASS A - PRE-MADE BASE

LOT 1 - Red
LOT 2 - White
LOT 3 - With any added ingredient

CLASS B - BRANDIED FRUIT (must be 21 to enter)

CLASS C - BREWED BEVERAGE

(must be 21 to enter Lot 1 through Lot 13)

LOT 1 - Red Wine, Sweet
LOT 2 - Red Wine, Dry
LOT 3 - Red Wine, Blends
LOT 4 - White Wine, Sweet
LOT 5 - White Wine, Dry
LOT 6 - White Wine, Blends
LOT 7 - Brandy Base
LOT 8 - Vodka Base
LOT 9 - Gin Base
LOT 10 - Blended Base
LOT 11 - Schnapps
LOT 12 - Cordial
LOT 13 - Champagne
LOT 14 - Root Beer

CLASS D - BEER

(must be 21 to enter Lot 1 through Lot 4)

LOT 1 - Lager
LOT 2 - Pilsner
LOT 3 - Ale
LOT 4 - Other

CLASS E - KOMBUCHA

CLASS F - CIDER

CLASS G - MEAD

LOT 1 - Traditional
LOT 2 - Other

CLASS H - OTHER

DEPARTMENT S FARM PRODUCTS

Superintendent: Tracy Roemer 360-201-8837
Kim Sheets 206-947-2614

**Entry Check In: Monday, August 7th, 4-7 pm
and Tuesday, August 8th, 7-11:30 am**
Entry Check Out: Sunday, August 13th, 9-11 am
See General Rules on pages 26-27

Premiums: 1st - \$3, 2nd - \$2, 3rd - \$1

DIVISION A - 6 yrs & Under
DIVISION B - 7-9 yrs
DIVISION C - 10-12 yrs
DIVISION D - 13-17 yrs
DIVISION E - ADULT 18-64 yrs
DIVISION F - SENIORS 65 & over
DIVISION G - SPECIAL
DIVISION H - PROFESSIONAL

No labels on bottles or jars.

CLASS A - APIARY PRODUCTS/HONEY

LOT 1 - Extracted Honey (one pint)
LOT 2 - Honeycomb (one pound)

CLASS B - BUTTER

CLASS C - CHEESE

LOT 1 - Hard
LOT 2 - Soft
LOT 3 - Other

CLASS D - POULTRY PRODUCTS: EGG (1/2 dozen)

LOT 1 - Brown
LOT 2 - Colored
LOT 3 - White
LOT 4 - Mixed

CLASS E - HAY - FLAKE ONLY, TIED AND SECURE

LOT 1 - 1st Cutting Alfalfa
LOT 2 - 2nd Cutting Alfalfa
LOT 3 - Clover
LOT 4 - Grass - Alfalfa
LOT 5 - Grass - Timothy, etc.
LOT 6 - Cereal - Oats, Barley, etc.
LOT 7 - Other



DEPARTMENT T LARGE HOUSEHOLD ACCESSORIES

Superintendents: Julie Newhouse 208 597-6957

**Entry Check In: Monday, August 7th, 4-7 pm
and Tuesday, August 8th, 7-11:30 am**
Entry Check Out: Sunday, August 13th, 9-11 am
See General Rules on pages 26-27

Premiums: 1st - \$3, 2nd - \$2, 3rd - \$1

DIVISION A - BEGINNER 17years & Under
DIVISION B - BEGINNER 18 years & Over
DIVISION C - INTERMEDIATE
DIVISION D - ADVANCED
DIVISION E - SPECIAL
DIVISION F - PROFESSIONAL

- **ALL quilts are to be clean with no offensive odors and free of pet hair.**
- **Due to space restrictions the entire quilt cannot be Displayed. A 4x6 photo can be submitted with the quilt to be attached to the quilt for display after judging is complete.**

CLASS A - TABLECLOTH

- LOT 1 - Crocheted
- LOT 2 - Embroidered
- LOT 3 - Machine Quilted
- LOT 4 - Other

CLASS B - BEDSPREAD, not Quilted

- I Baby; II Bedspread; III Lap; IV Miniature
- LOT 1 - Appliqué
 - LOT 2 - Crocheted
 - LOT 3 - Embroidered
 - LOT 4 - Other

CLASS C - QUILT

- I. Baby; II. Bedspread; III. Lap; IV Miniature,
- LOT 1 - All Flannel
 - LOT 2 - Appliqué
 - LOT 3 - Hand Quilted
 - LOT 4 - Machine Quilted by Exhibitor
 - LOT 5 - Combination Hand and Machine Quilt
 - LOT 6 - Embroidered
 - LOT 7- Made by Exhibitor and Professionally Quilted
 - LOT 8 - Photo
 - LOT 9 - Recycled
 - LOT 10 - Tied
 - LOT 11 - Other

CLASS D - AFGHAN

- LOT 1 - Baby Afghan
- LOT 2 - Crocheted, Granny
- LOT 3 - Crocheted, Ripple
- LOT 4 - Crocheted, Other
- LOT 5 - Homespun
- LOT 6 - Knitted
- LOT 7 - Navajo
- LOT 8 - Waves
- LOT 9 - Woven



HEAD TO GOOD GRIEF!

WE HAVE REFRESHING MILKSHAKES,
FANTASTIC PIZZAS AND TASTY
BURGERS WAITING FOR YOU!

HEAD NORTH ON 95 TOWARDS EASTPORT AND YOU WILL FIND US!

(208) 267-1092

FORMALLY KNOWN AS "COMPASS GRILLE"



FULL SERVICE PARTS & SALES

3 MINUTES SOUTH OF SANDPOINT IN SAGLE ON HWY 95

1-866-783-0047 | 208-263-4212

PIERCEAUTOCENTER.COM



WE ARE AT YOUR SERVICE

FREE
Shuttle Service Available

Early Bird
Drop Off Available

DEPARTMENT U SMALL HOUSEHOLD ACCESSORIES

(Sewn, Knitted, Crocheted, Embellished
and other Handwork)

Superintendents: Jordan Burt 360-780-0703

**Entry Check In: Monday, August 7th, 4-7 pm
and Tuesday, August 8th, 7-11:30 am**

Entry Check Out: Sunday, August 13th, 9-11 am

See General Rules on pages 26-27

Premiums: 1st - \$3, 2nd - \$2, 3rd - \$1

DIVISION A - 6 yrs & Under

DIVISION B - 7-9 yrs

DIVISION C - 10-12 yrs

DIVISION D - 13-17 yrs

DIVISION E - ADULTS 18-64 yrs

DIVISION F - SENIORS 65 & Over

DIVISION G - SPECIAL

DIVISION H - PROFESSIONAL

CLASS A - APPLIQUE

CLASS B - BRAZILIAN EMBROIDERY

CLASS C - CANDLE-WICKING

a) Ribbon

b) Thread

CLASS D - CREWEL

a) Ribbon

b) Thread

CLASS E - CROCHET

a) Thread

b) Yarn

CLASS F - EMBROIDERED

a) Hand

b) Machine

c) Raw Edge

CLASS G - KNITTED

a) Hand

b) Machine

CLASS H - LATCH HOOK

CLASS I - NEEDLEPOINT

CLASS J - PLASTIC CANVAS

CLASS K - RIBBON EMBROIDERY

CLASS L - TATTING

CLASS M - WOVEN

CLASS N - QUILTED

CLASS O - RECYCLED

CLASS P - PAINTED

CLASS Q - LACE

CLASS R - HANDSPUN

CLASS S - MACRAME

CLASS T - CHICKEN SCRATCH

CLASS U - CROSS STITCH

CLASS V - RUGS

CLASS W - OTHER

Use Lots below for Classes A - U & W

LOT 1 - Dish Towel

LOT 2 - Dish Cloths, set of 2

LOT 3 - Doily

a) up to 14"

b) 14"-24"

c) over 24"

LOT 4 - Doll, dressed

LOT 5 - Pillowcases, set of 2

LOT 6- Child's Pillowcase only 1

LOT 7 - Placemats, set of 4

LOT 8 - Potholders, set of 2

LOT 9 - Hot Dish Carrier

LOT 10 -Table Runner

LOT 11 - Pillow

LOT 12 - Edgings

LOT 13 - Book Mark

LOT 14 - Fabric Hangings

a) Hand

b) Machine

c) Combination

1) Up to 18"

2) 18" - 36"

3) 36" and over

LOT 15 - Cross Stitch Hangings

a) Cross Stitch (counted) up to 5" x 7"

b) Cross Stitch (counted) up to 8" x 10"

c) Cross Stitch (counted) over 8" x 10"

1) 8 and 10 count

2) 12 and 14 count

3) 16 count and up

LOT 16 - Rugs

A) Braided

B) Crocheted

C) Hooked

D) Knitted

E) Other

LOT 17 - Other



First place!!



NORTH IDAHO WELDING & SUPPLY

Custom Fabrication
Repair, Supplies & More

64805 Hwy 2
Bonners Ferry, Id 83805

208.267.4050

ASCEND CHECKING

OPEN YOUR FREE
CHECKING WITH
DIVIDENDS
3.50%
APY*



*APY=Annual Percentage Yield. Qualifiers to earn interest on Ascend Checking must be enrolled in eStatements with a valid email and have 20 transactions on your Ascend Checking Account debit card, excluding transactions at ATMs and one monthly direct deposit of more than \$250. Requirements are calculated for each calendar month. 3.50% APY applies to the first \$15,000. Balances over \$15,000 earn 0.00% APY. If the account requirements are not met, the rate will be 0.00% APY. No minimum balance is required to earn APY. Rates may change after account opening. Fees may reduce earnings. APY accurate as of 03/01/23. Insured by NCUA.
Learn more at p1fcu.org/ascend



Engineered Roof & Floor Trusses

with friendly service

www.trusstek.com

208-267-7471 • 800-269-7471 • 208-267-5246 (fax)

64679 Highway 2 • Bonners Ferry, ID 83805

Wink Inc.
Crushing · Hauling · Civil

Alan Winkelseth
C:(208)290-1378
O:(208)267-5804
P.O. Box 1163 Bonners Ferry Id • wink_317@hotmail.com

DEPARTMENT V PHOTOGRAPHY

Superintendent: Renee Murphy 208 946-7117
Jenni Dougherty 208-610-0131

**Entry Check In: Monday, August 7th, 4-7 pm
and Tuesday, August 8th, 7-11:30 am
ALL ENTRIES MUST BE READY AND TURNED
IN BY 11:30. NO EXCEPTIONS.
Entry Check Out: Sunday, August 13th 9-11 am
See General Rules on pages 26-27**

Premiums: 1st - \$3, 2nd - \$2, 3rd - \$1

DIVISION 1 - COLOR - ADULT
DIVISION 2 - COLOR - JUNIOR
DIVISION 3 - BLACK and WHITE - ADULT
DIVISION 4 - BLACK and WHITE - JUNIOR
DIVISION 5 - COLOR - PROFESSIONAL
DIVISION 6 - BLACK and WHITE - PROFESSIONAL
DIVISION 7 - SPECIAL

PHOTOGRAPHY RULES

1. Prints previously entered in the Boundary County Fair are not eligible.
2. No copy machine prints will be allowed.
3. **One entry per lot/class.**
4. Best of Class ribbon will be awarded if there are more than three entries in the class and the photo merits the award.
5. **The photo entered must be taken by the exhibitor whose name appears on the entry tag.**
6. Photographs are judged on composition, technique, and impact.
7. **The decision of the judge is final.**
8. Junior Division is 8th grade or younger.
9. Rules for Amateurs - Division 1, 2, 3, 4 & 7

**ALL PRINTS MUST BE ON CONSTRUCTION PAPER
NOT EXCEEDING A ONE INCH BORDER AROUND
THE PRINT.**

- a. The maximum print size you can enter is 5" x 7".
 - b. No matte boards will be accepted in Division 1, 2, 3, 4 & 7.
 - c. Any prints that come framed will automatically be put in the professional class, with the exception of Class F - Historical.
 - d. Hint- Do not use double-stick tape.
10. Rules for Professional - Division 5 and 6.

**ALL PROFESSIONAL PHOTOS MUST BE READY TO
HANG WITH SECURE HANGERS WHEN ENTERED**

(Volunteer's not responsible for framed photos)

- a. Those entering in the professional class cannot enter in any other class.
- b. The minimum print size for professional is 8" x 10".
The maximum print size is 16" x 20".
- c. Prints must be in ready to hang frames.
- d. Please see *General Rules and Regulations* page 19, for the definition of professional.

FILM & DIGITAL

CLASS A - ANIMALS

- LOT 1 - Farm
- LOT 2 - Pets
 - a) Cat
 - b) Dog
 - c) Other
- LOT 3 - Wild
- LOT 4 - Birds
- LOT 5 - Insects

CLASS B - ARCHITECTURE (Building or Structure)

CLASS C - FARM SCENES

CLASS D - FLOWERS

- LOT 1 - Single Flower
- LOT 2 - Multiple Flower

CLASS E - FOUR SEASONS

- LOT 1 - Spring
- LOT 2 - Summer
- LOT 3 - Fall
- LOT 4 - Winter

CLASS G- HUMOROUS

CLASS H- LANDSCAPE

CLASS I - MARINE and WATER

- LOT 1 - Lake
- LOT 2 - Ocean
- LOT 3 - River and Stream

CLASS J - MISCELLANEOUS

CLASS K - PANORAMIC

CLASS L - PEOPLE and ANIMAL(S)

CLASS M - PERSON/PEOPLE

- LOT 1 - Baby under one year (1 person)
- LOT 2 - Child 12 years and under (1 person)
- LOT 3 - Adult (1 person)
- LOT 4 - People in groups
- LOT 5 - Selfie

CLASS N - PORTRAIT (primarily a posed photograph)

- LOT 1 - Baby under one year (1 person)
- LOT 2 - Child 12 years and under (1 person)
- LOT 3 - Adult (1 person)
- LOT 4 - People in groups

CLASS O - SPORTS

CLASS P - STILL LIFE

CLASS Q - STORY SERIES

(6-8 prints on one matte that tells a story)

CLASS R - SKY

- LOT 1 - Sunrise
- LOT 2 - Sunset
- LOT 3 - Rainbow
- LOT 4 - Clouds
- LOT 5 - The Heavens

CLASS S - TRANSPORTATION

CLASS T - WEDDINGS

CLASS U - SPECIAL EFFECTS (multiple exposures, multiple images, infra-red, bas-relief, blurred motion, computer enhanced, etc.)

*Historical Photos may be displayed.



Corson's Creams



We Breed, Raise & Show
American Cream Draft Horses

Contact us at 208-267-7673
morganacream@gmail.com
or Find us on Facebook



WWW.FARNORTHCOMPANY.COM



KERR SUPPLY
automotive/industrial/welding
fasteners/hydraulic hoses

6838 Main, PO Box 298,
Bonners Ferry, ID 83805
Phone: (208) 267-5531
Fax: (208) 267-3546

Skywalker TREE CARE

Michael Richardson
BS Forestry, ISA Certified Master Arborist

skywalkertreecare.com
skywalkertreecare@gmail.com (208) 610-4858

Erickson's Chic-N-Chop Restaurant, Inc.



Full Menu
Family Dining
Banquet Facilities

(208) 267-2431

Box 1092 6421 South Main
Bonners Ferry, Idaho
83805

Ronald & Edith
Erickson



SCOTT HITTLE
208.290.1069

AUSTIN HITTLE
208.610.8429



UNIVERSAL
WELL DRILLING

www.universalwelldrilling.com

Serving Idaho & Montana

DEPARTMENT W VEGETABLES and HERBS

Superintendents: Angie Schnuerle 208 597-6307

Entry Check In: Monday, August 7th, 4-7 pm
and Tuesday, August 8th, 7-11:30 am

Entry Check Out: Sunday, August 13th, 9-11 am
See General Rules on pages 26-27

Premiums: 1st - \$3, 2nd - \$2, 3rd - \$1

DIVISION A - 6 yrs & Under

DIVISION B - 7- 9 yrs

DIVISION C - 10-12 yrs

DIVISION D - 13-17 yrs

DIVISION E - ADULT 18-64 yrs

DIVISION F - SENIORS 65 & over

DIVISION G - SPECIAL

DIVISION H - PROFESSIONAL

1. The fair will furnish flats and plates where called for
2. Items may be added to entry form at entry time
3. See "HINTS" that may specify entry requirements
4. All entries in the division must be grown and prepared for entry by the exhibitor
5. Variety, if known, should be listed on the entry tag

CLASS A - BEANS

HINT: Long, straight, uniform color, stems on, unwashed, wiped clean.

- LOT 1 - Beans, Green Bush, 10 Pods
- LOT 2 - Beans, Yellow Bush, 10 Pods
- LOT 3 - Beans, Green Pole, 10 Pods
- LOT 4 - Beans, Purple Pole, 10 Pods
- LOT 5 - Beans, Purple Bush, 10 Pods
- LOT 6 - Beans Other
- LOT 7 - Dragon Tongue, 10 Pods

CLASS B - COLE CROPS

HINT: Cabbage should be semi-peeled, solid, disease and damage free, stem off

- LOT 1 - Broccoli, 1 Head
- LOT 2 - Brussels Sprouts, 1 Pint
- LOT 3 - Cabbage, 1 Head
- LOT 4 - Cabbage, 1 Head Chinese
- LOT 5 - Cabbage, 1 Head, Late
- LOT 6 - Cabbage, 1 Head, Red
- LOT 7 - Cauliflower, 1 Head
- LOT 8 - Chard 3 Stems
- LOT 9 - Kale 3 Stems
- LOT 10 - Kohlrabi (1" stem, roots off)
 - a) green
 - b) purple
 - c) other

- LOT 11 - Rhubarb, bunch of 5 (pulled, 1" leaf)
- LOT 12 - Spinach, 3 Plants

CLASS C - CORN

HINT: Remove husks, 1/2" stem, do not trim end

- LOT 1 - Corn, Sweet, 3 Ears
 - a) yellow
 - b) white
 - c) bi-color
- LOT 2 - Corn, Popcorn, 3 Ears

CLASS D - CUCUMBER

HINT: Uniform size, color, 1/2 " stem

- LOT 1 - Cucumbers, 3, Pickling Under 3.5"
- LOT 2 - Cucumbers, 3, Slicing
- LOT 3 - Cucumber, 3, Lemon
- LOT 4 - Cucumbers, 3, Other

CLASS E - PEPPER

HINT: Uniform size, color, 1/2 - 1" stem

- LOT 1 - Peppers, 3 Bell
 - a) green
 - b) red
 - c) yellow
 - d) purple
- LOT 2 - Peppers, 3 Hot
 - a) green
 - b) red
 - c) yellow
 - d) black

LOT 3 - Peppers, 3 Wax

LOT 4 - Cherry 3

CLASS F - PUMPKIN

HINT: Mature, ripened color stem on

- LOT 1 - Pumpkin, Pie
- LOT 2 - Pumpkin, Jack-O-Lantern
- LOT 3 - Pumpkin, White
- LOT 4 - Pumpkin, Mini
- LOT 5 - Cinderella

CLASS G - SQUASH

HINT: Summer Skin penetrable by thumb nail, 1" stem

- LOT 1 - Squash, 1 Pattypan
 - a) yellow
 - b) green
 - c) white
- LOT 2 - Squash, 1 Zucchini green
 - a) 8 inch and under
 - b) over 8 inch
- LOT 3 - Squash, 1 Spaghetti (late summer)
- LOT 4 - Squash, Yellow Zucchini
 - a) 8 inch and under
 - b) Over 8 inch
- LOT 5-Squash, 1 Other Summer Variety
 - a) Crookneck
 - b) other

HINT: Winter Harden shell, 1"-2" stem

- LOT 5 - Squash, 1 Acorn
- LOT 6 - Squash, 1 Banana
- LOT 7 - Squash, 1 Buttercup
- LOT 8 - Squash, 1 Butternut
- LOT 9 - Squash, 1 Crookneck
- LOT 10 - Squash, 1 Hubbard
- LOT 11 - Squash, 1 Other Winter Variety
 - a) Blue Ballet
 - b) Cushaw
 - c) Delicates
 - d) DuLong
 - e) Futsu
 - f) Pondini
 - g) Other

CLASS H - MISC. VEGETABLES (above ground)

- LOT 1 - Celery, 1 Bunch
- LOT 2 - Eggplant, 1
- LOT 3 - Gourds, 3
- LOT 4 - Lettuce, 1 Head
- LOT 5 - Okra, 3 pods
- LOT 6 - Peas, 10 Pods
- LOT 7 - Most Unusual Variety
- LOT 8 - Humorous
- LOT 9 - Other